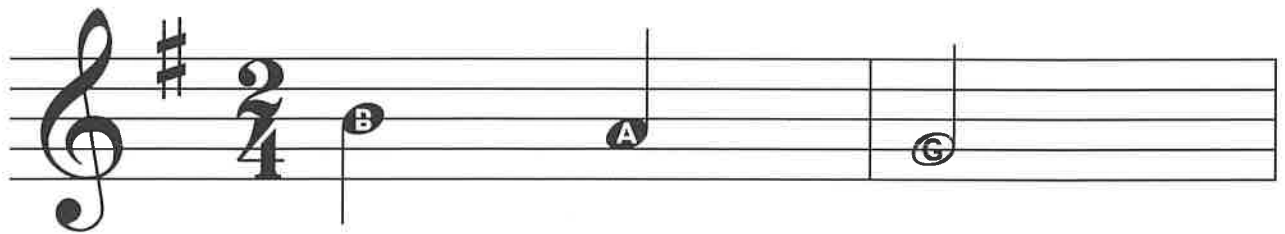


Hot Cross Buns

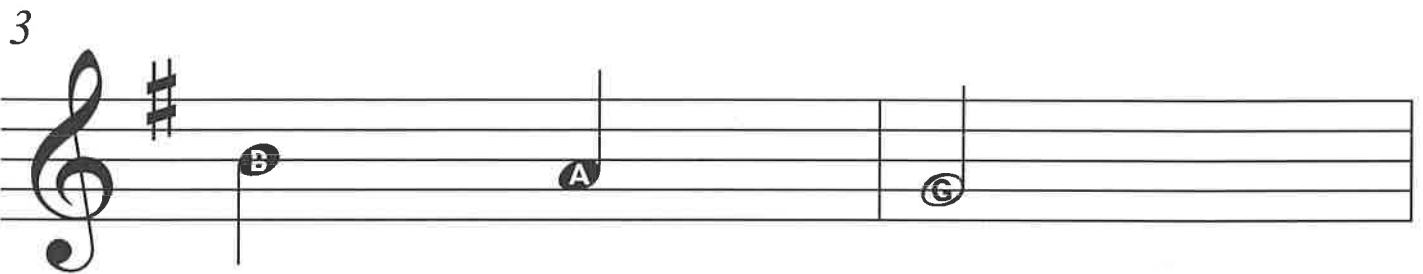
B, A and G

White Belt

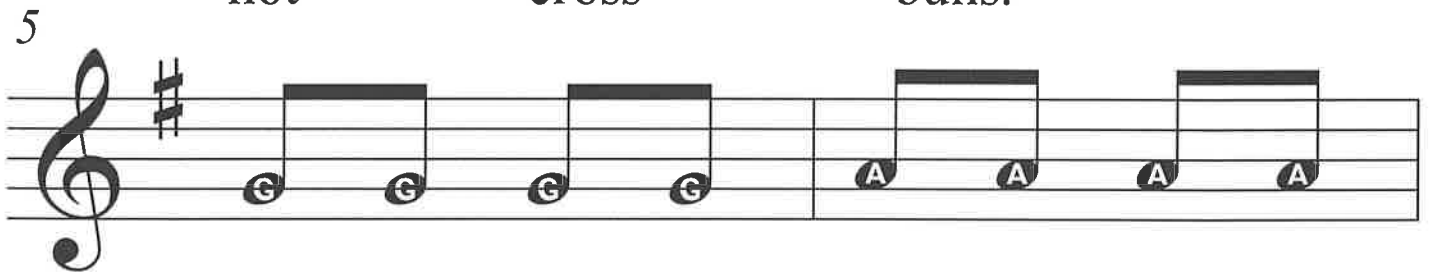
English Folk Song



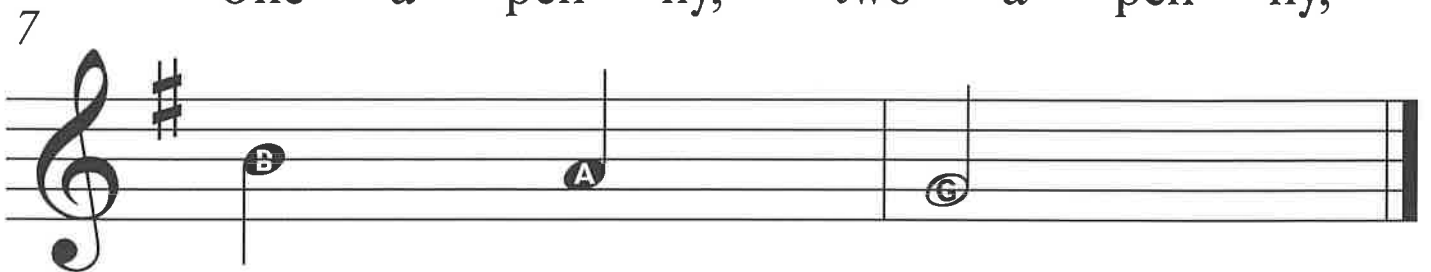
Hot cross buns,



hot cross buns.



One a - pen - ny, two a - pen - ny,



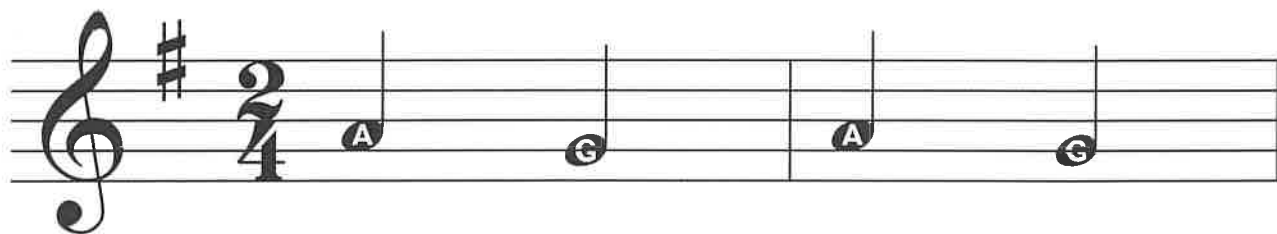
hot cross buns.

Nabe Nabe Soku Nabe

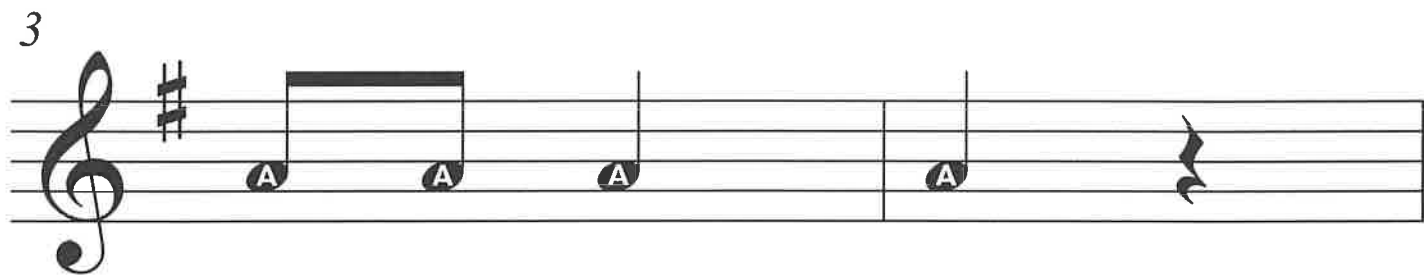
A, G and B

Yellow Belt

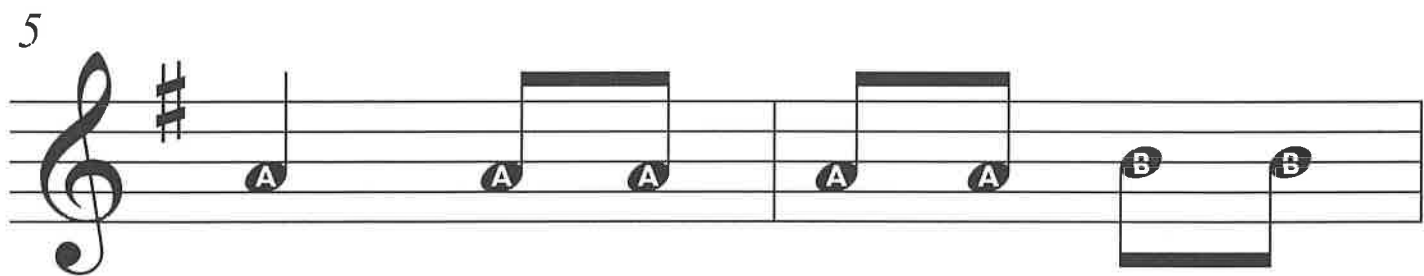
Japanese Folk Song



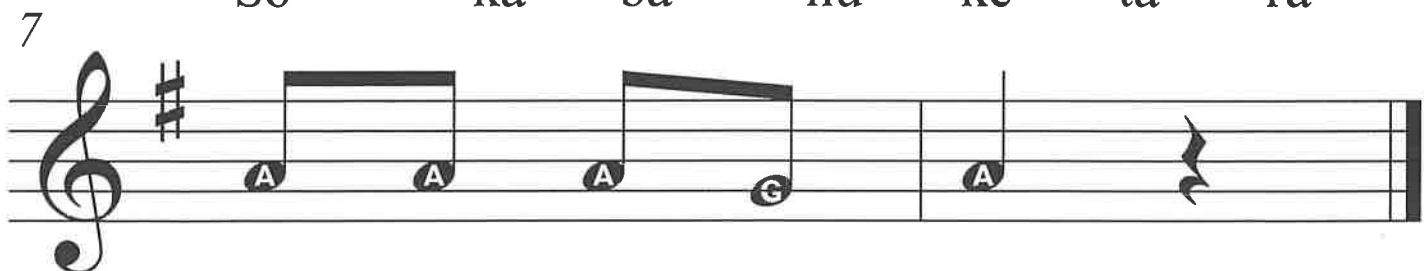
Na - be, na - be,



so - ko nu - ke



So - ka - ba nu - ke ta - ra



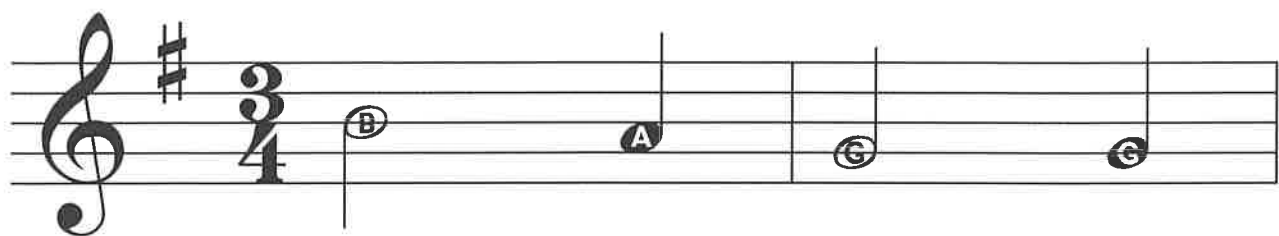
ka - eh ri - ma sho.

Fai Do Do

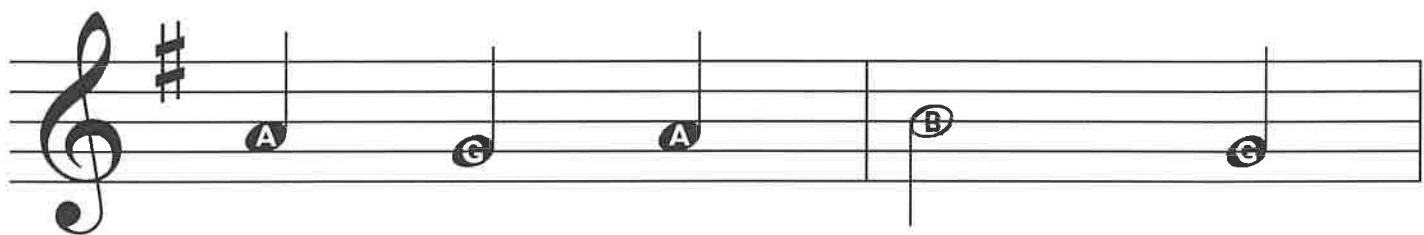
B, A and G in 3

Orange Belt

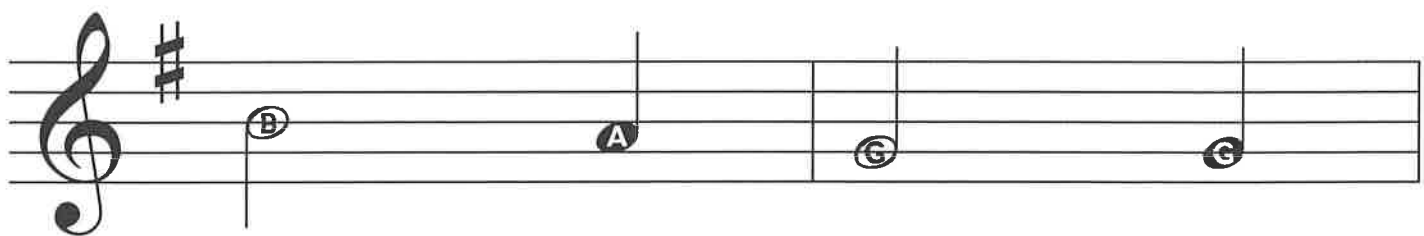
French and Cajun Folk Song



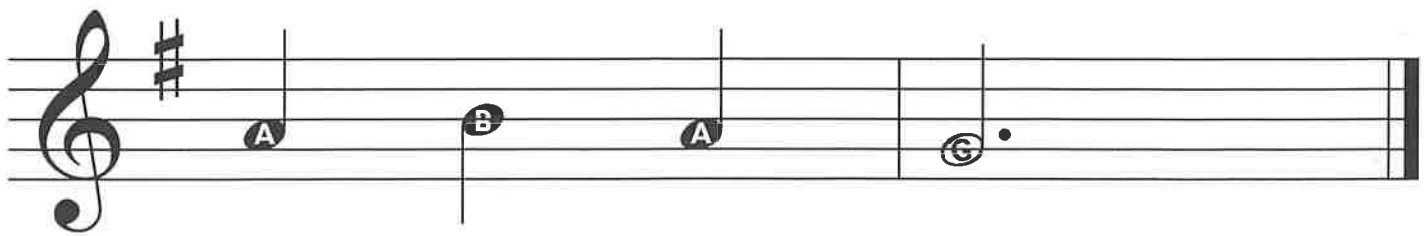
Fai do - do, Co -



las mon p'tit fre - re.



Fai do - do, tau -

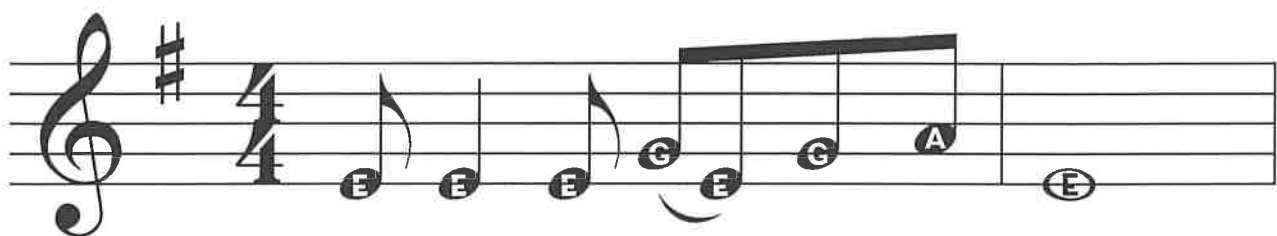


ras du lo - lo.

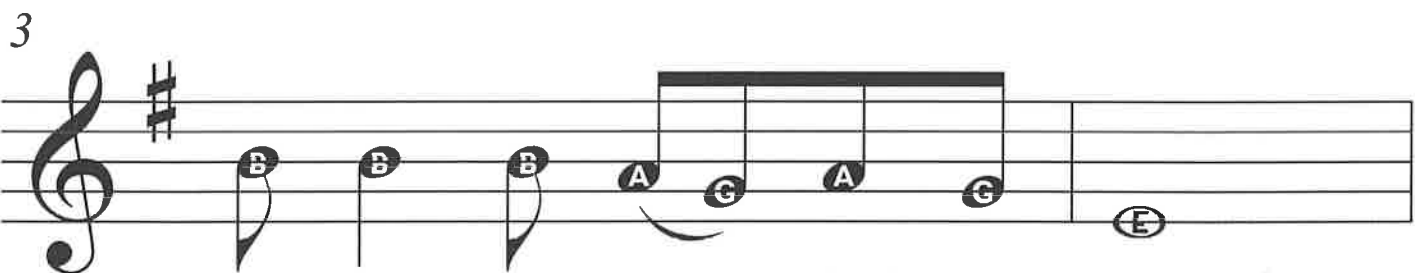
Captain, Don't Sidetrack Your Train

E, G, B, A and G

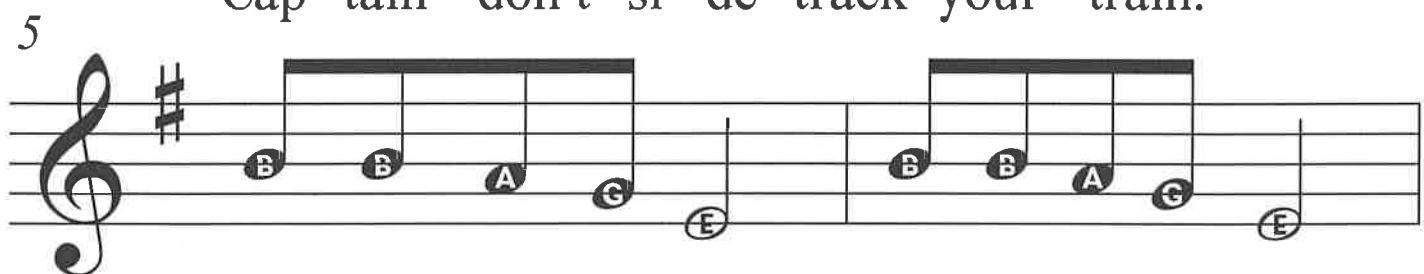
Green Belt North American Railroad Work Song



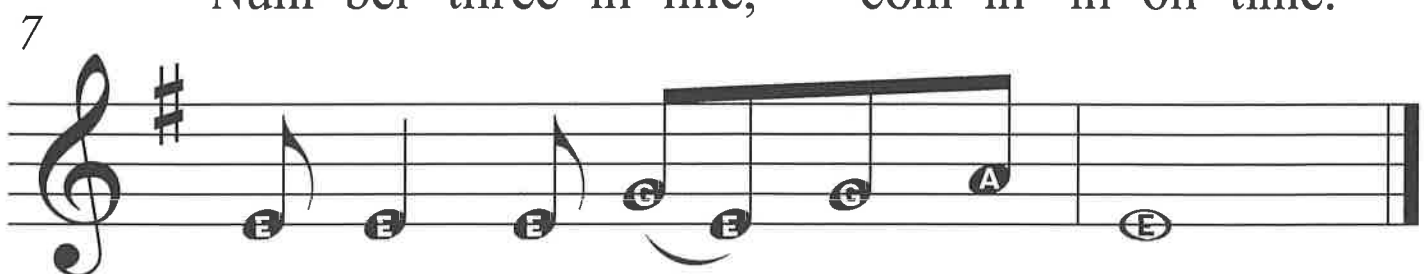
Cap-tain don't si-de track your train.



Cap-tain don't si-de track your train.



Num-ber three in line, com-in' in on time.

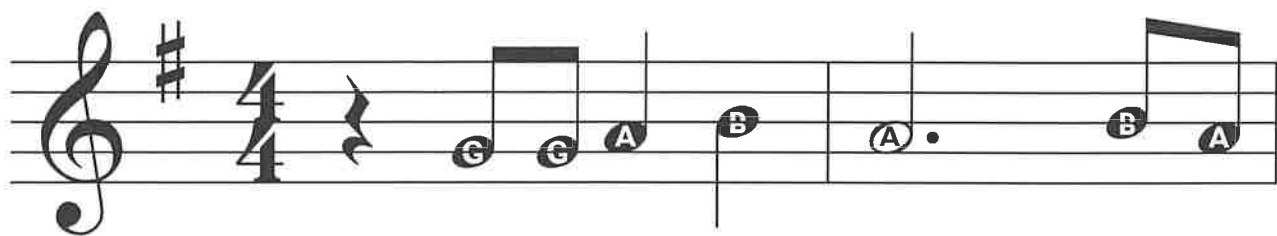


Cap-tain don't si-de-track your train.

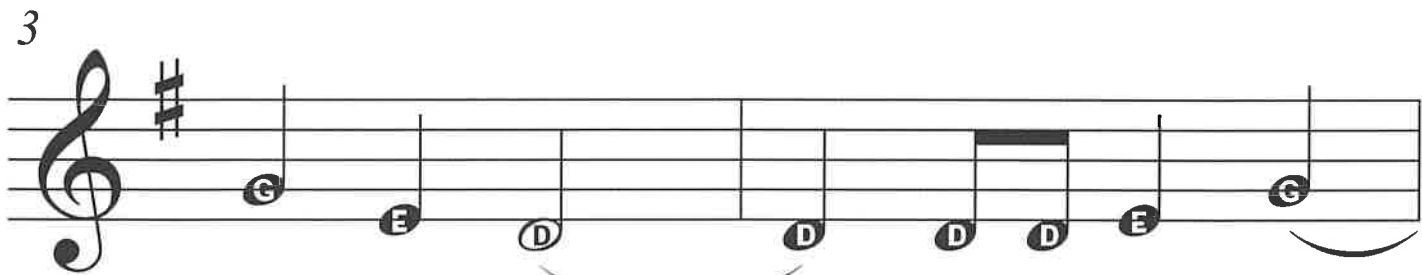
Chippewa Lullaby

G, A, B, low E and low D

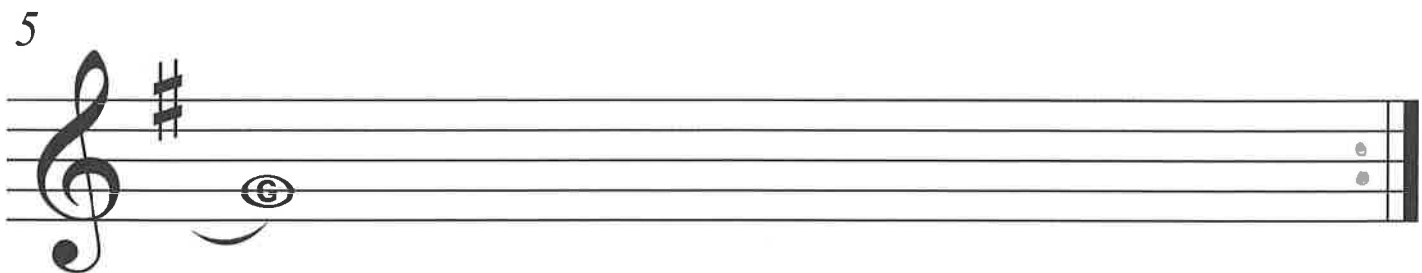
Purple Belt



eh We-eh - eh We-eh-



eh - eh eh - We-eh eh eh



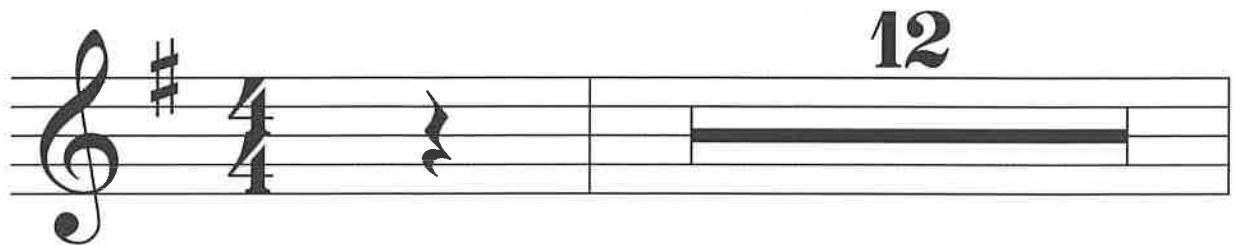
Papageno's Bird Call

G, A, B, C and D

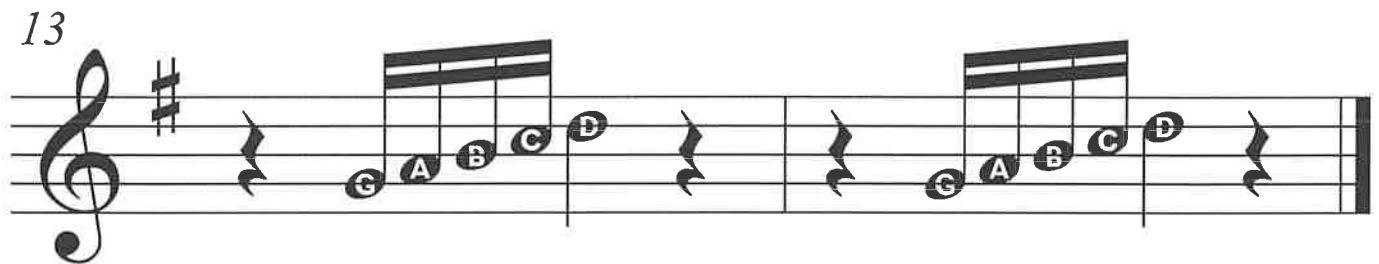
Blue Belt

Wolfgang Amadeus Mozart

12



13

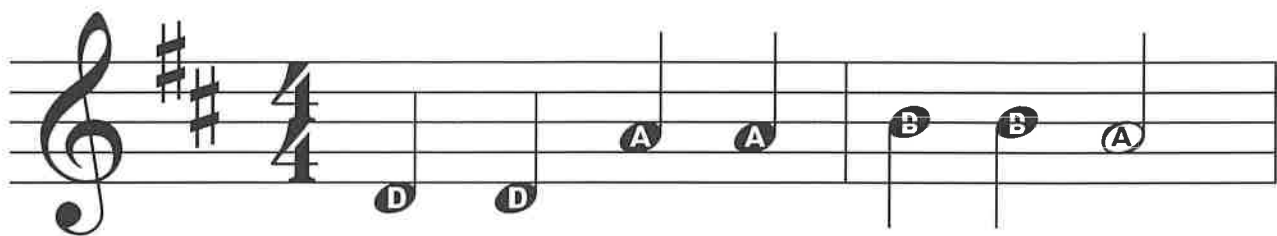


Twinkle, Twinkle, Little Star

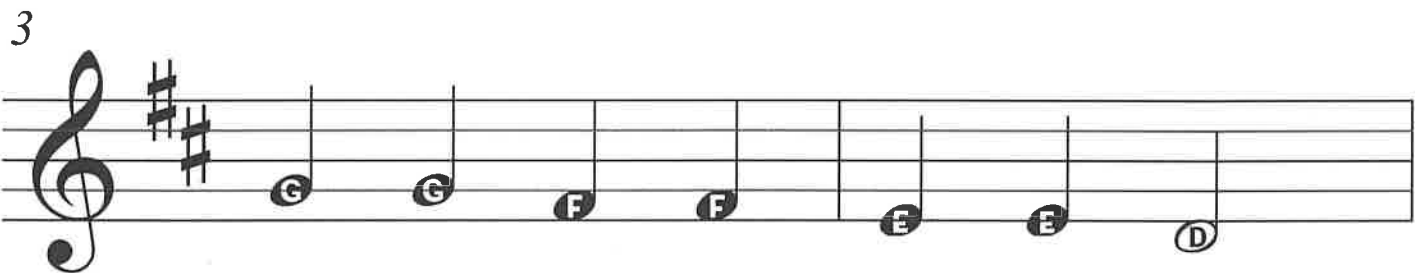
low D, low E, F#, G, A and B

Red Belt

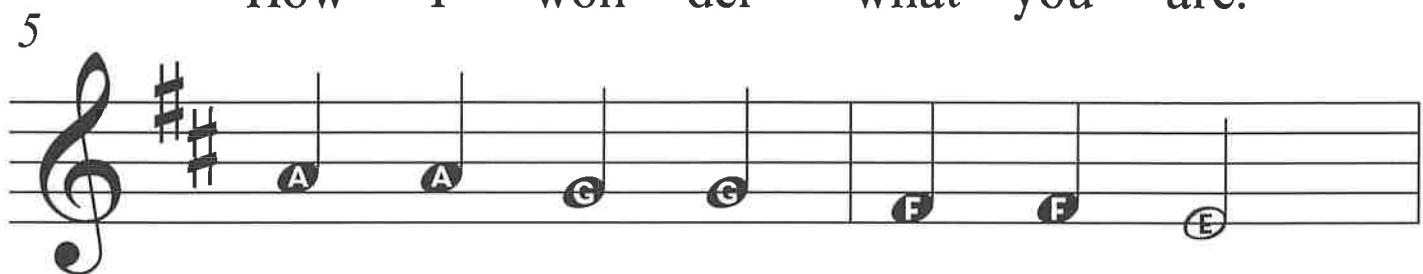
Traditional Traditional



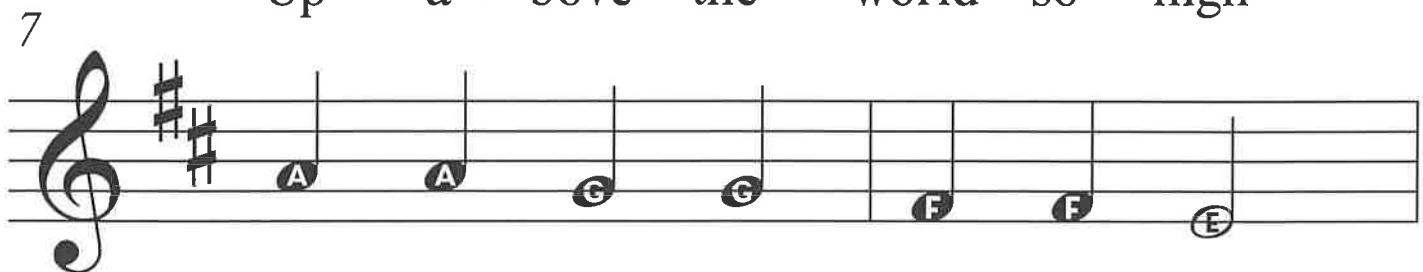
Twin-kle, twin-kle, lit - tle star.



How I won - der what you are.



Up a - bove the world so high

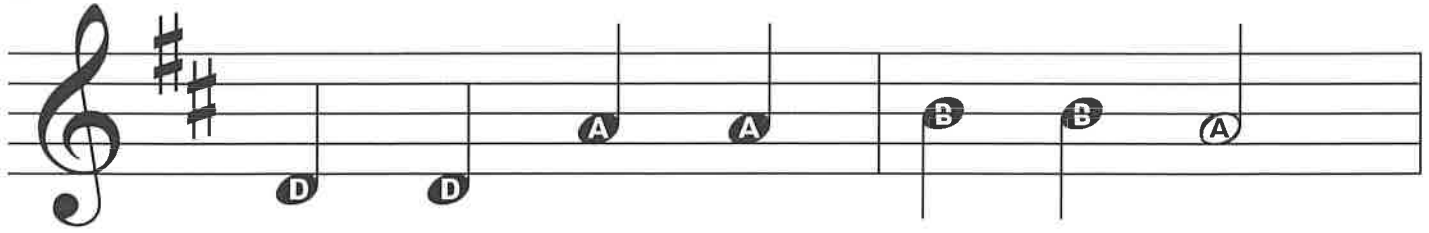


like a dia - mond in the sky.

2

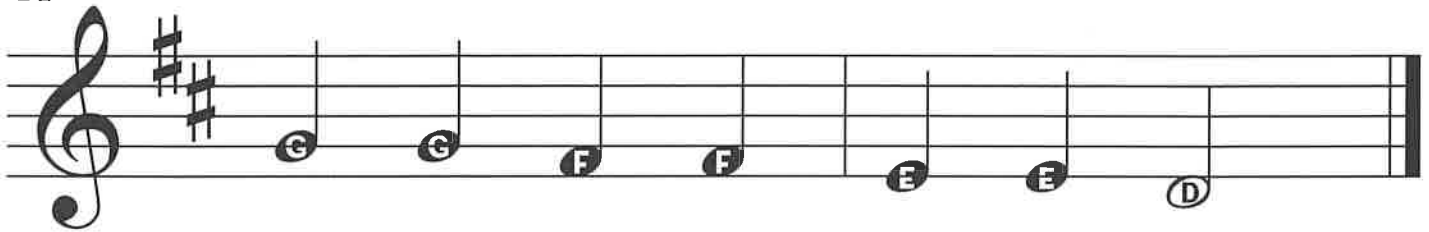
Twinkle

9



Twin - kle, twin - kle, lit - tle star.

11



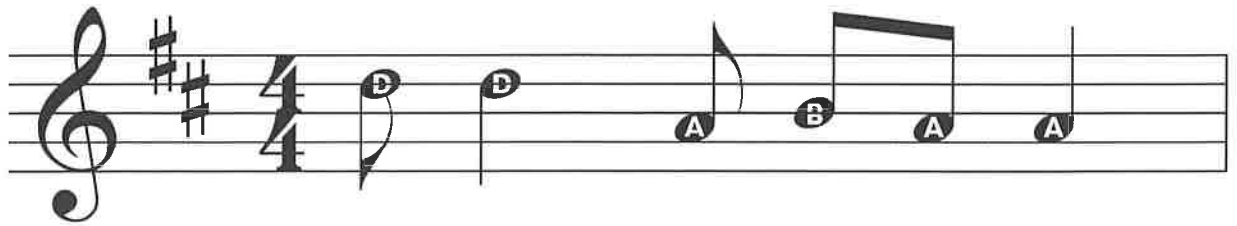
How I won - der what you are.

Funga Alafia

low D, low E, F#, A, B and D

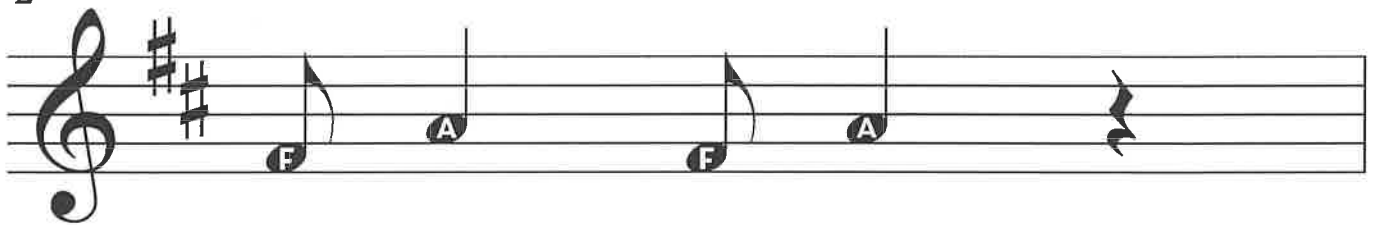
Brown Belt

Traditional Traditional



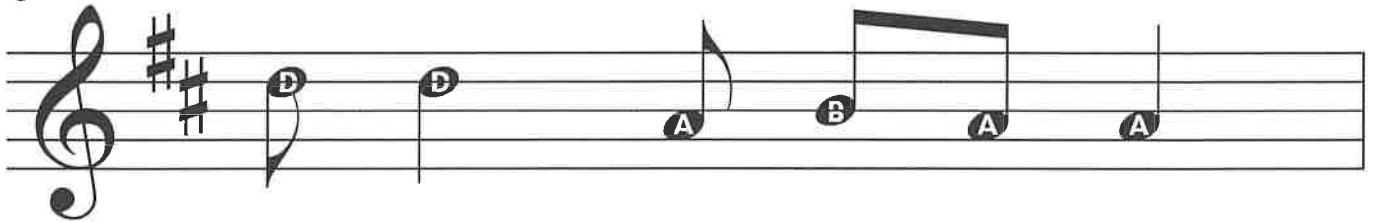
Fun - ga a - la - fi - a!

2



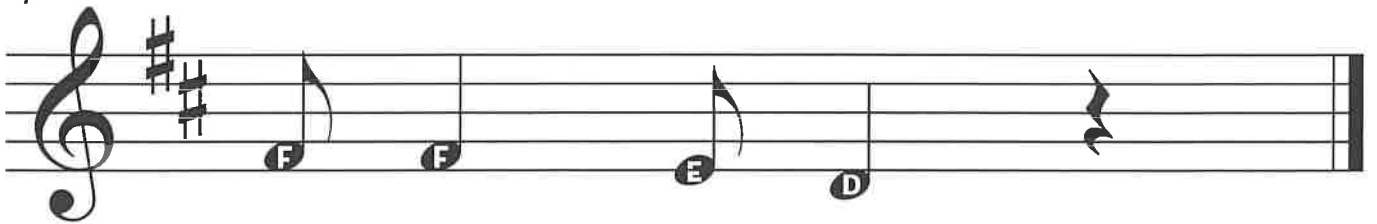
A - shay, a - shay.

3



Fun - ga a - la - fi - a!

4



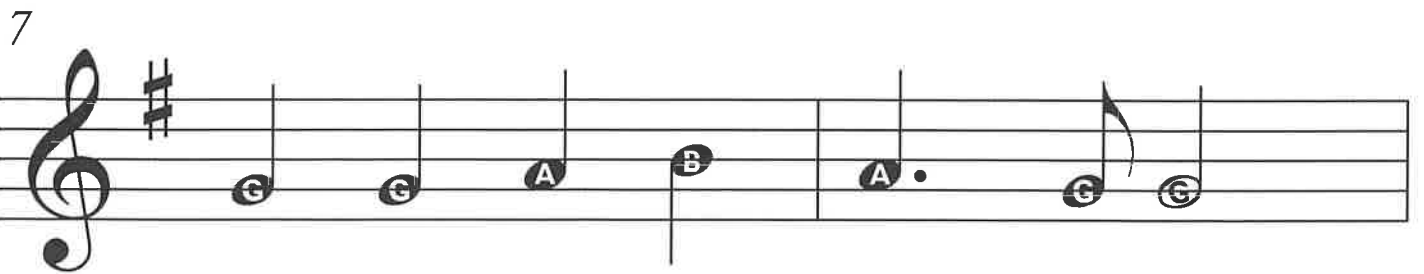
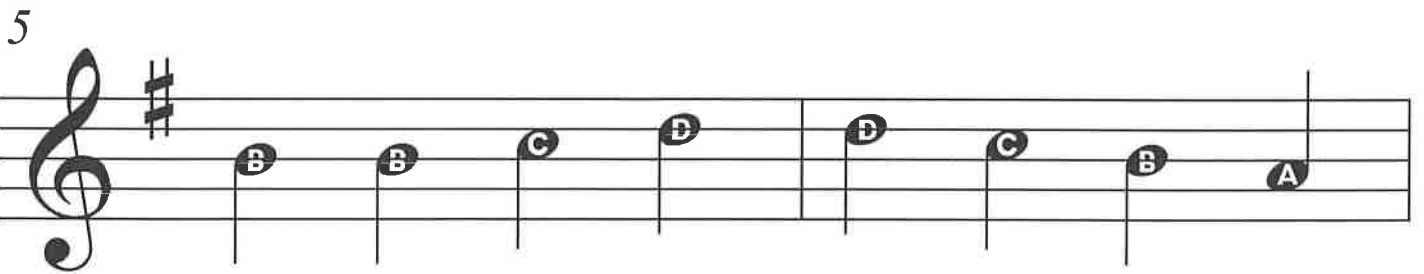
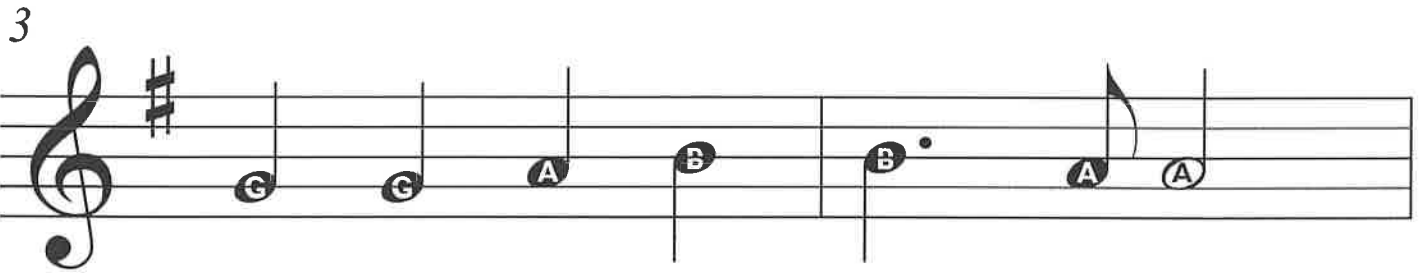
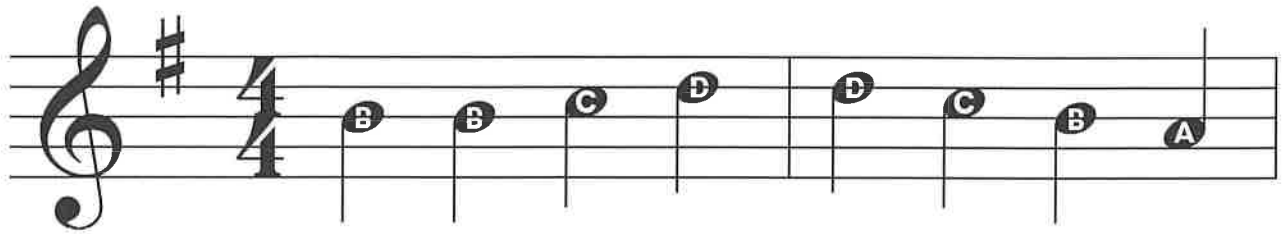
A - shay, a - shay.

Ode to Joy

low D, G, A, B, C and D

Black Belt

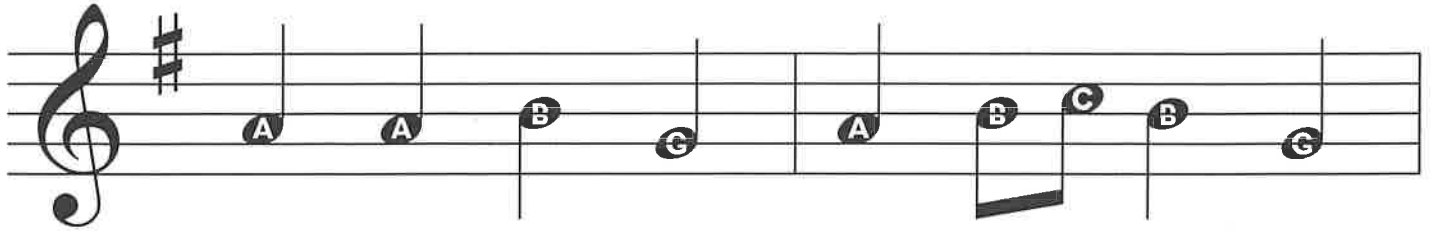
Ludwig van Beethoven



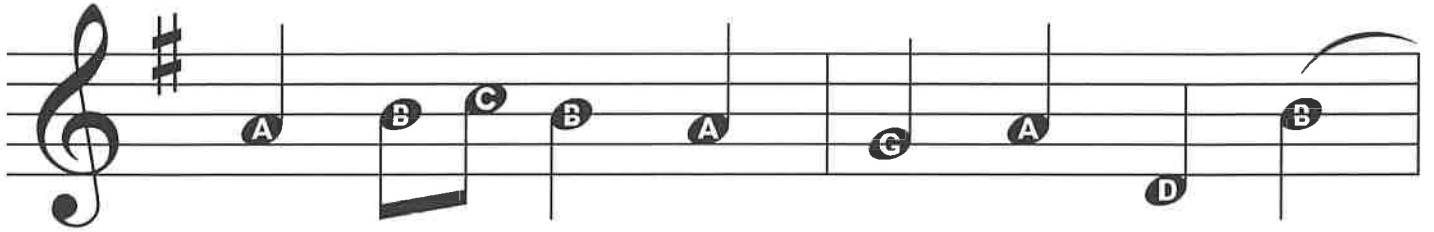
2

Ode to Joy

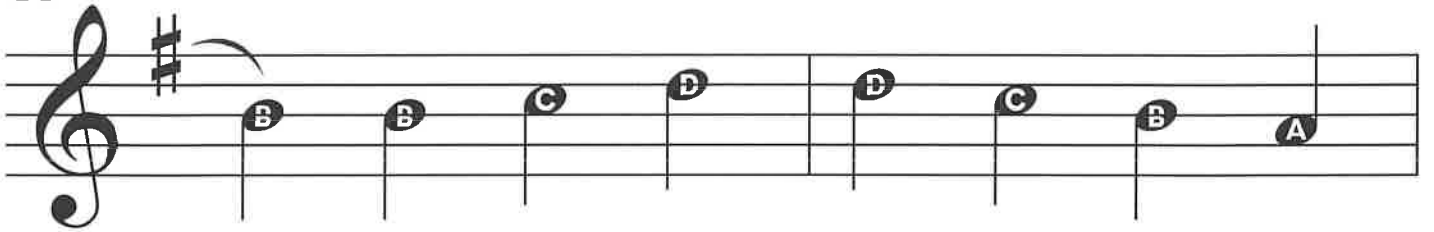
9



11



13



15

